



Raisin Region Conservation Authority

Annual Report 2021



Top:
Cooper Marsh Conservation Area
in South Glengarry

Left:
RRCA staff planting trees
in South Glengarry

Right:
RRCA-managed dam on Garry River system
in North Glengarry



The RRCA's Board of Directors is comprised of eight appointed representatives from its five member municipalities. Pictured, from left:

TOWNSHIP OF NORTH STORMONT
Robert Lefebvre

CITY OF CORNWALL
Councillors
Carilyne Hébert &
Claude McIntosh

TOWNSHIP OF SOUTH STORMONT
Deputy Mayor David Smith
& 2021 RRCA Chair,
Mayor Bryan McGillis

TOWNSHIP OF SOUTH GLENGARRY
2021 RRCA Vice-Chair,
Councillor Martin Lang &
Mayor Lyle Warden

TOWNSHIP OF NORTH GLENGARRY
Councillor Jacques Massie

RRCA GENERAL MANAGER
Richard Pilon



2021 RRCA Chair & South Stormont Mayor, Bryan McGillis

2021 RRCA Vice-Chair & South Glengarry Councillor, Martin Lang



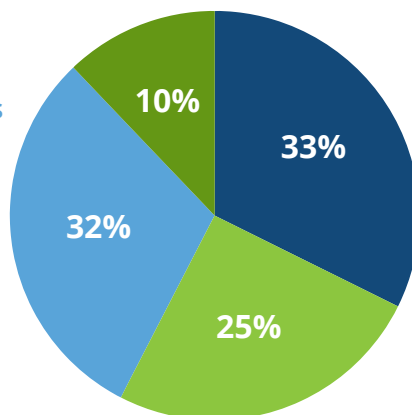
MESSAGE FROM THE 2021 CHAIR

It was a privilege to serve as Chair of the Raisin Region Conservation Authority (RRCA) Board of Directors in 2021 as we continued in our mission to work with our communities for a better environment and healthy future. I am proud of the accomplishments of our Board, 14 staff members, and 14 summer employees in continuing to deliver our programs and services to the residents and municipalities within our watershed jurisdiction, especially throughout the challenges posed by the COVID-19 pandemic.

The RRCA continued to support sustainable development and the protection of people and property in 2021 by reviewing an unprecedented 311 development applications. We also continued to protect, enhance, and restore our local environment through various stewardship initiatives, such as adding 60,000 trees to the local landscape, partnering with the agriculture community to enact best management practices, and adding to the 1,644 acres of environmentally significant land owned and protected by the RRCA through the donation of a 100-acre wetland by the Township of South Stormont.

I look forward to working with the Board and staff in 2022 under the leadership of the new Chair, South Glengarry Councillor Martin Lang, and new Vice-Chair, South Stormont Deputy Mayor David Smith.

FUNDING CONSERVATION: RRCA 2021 Funding sources



Municipal levy	\$870,328
Authority-generated	\$821,081
Government grants	\$663,191
Partners	\$263,552
2021 total	\$2,618,152



SCAN TO LEARN MORE ABOUT THE RRCA'S PROGRAMS AND SERVICES



RRCA ENHANCING HABITAT AND VISITOR EXPERIENCE AT COOPER MARSH CONSERVATION AREA

The RRCA embarked on a three-year, biodiversity-enhancement project at Cooper Marsh Conservation Area in South Glengarry. The initiative features habitat planting and enhancement, invasive species control, biodiversity monitoring, and outreach. This project was undertaken with the financial support of the Nature Smart Climate Solutions Fund, a Government of Canada's Department of Environment and Climate Change program in partnership with Conservation Ontario. Funding support has also been provided by Ontario Power Generation.



RRCA PROCESSED RECORD NUMBER OF DEVELOPMENT APPLICATIONS

The RRCA had a record year in 2021 while supporting sustainable development within its watershed jurisdiction in Cornwall and surrounding area of SDG, receiving a total of 311 development applications. At its core, this regulatory work is about protecting people and property, as well as the local environment.



TOWNSHIP OF NORTH GLENGARRY RENEWED DAM MANAGEMENT PARTNERSHIP WITH RRCA

The RRCA renewed its longstanding partnership with the Township of North Glengarry to manage the three dams on the Garry River. The RRCA manages water levels in the Garry River system, which includes Loch Garry, Middle Lake, and Mill Pond. In total, the RRCA manages and operates eight water control structures within its jurisdiction for recreation, flood control, low flow augmentation, and drinking water supply.



TOWNSHIP OF SOUTH STORMONT DONATES 100-ACRE WETLAND TO RRCA

The Township of South Stormont donated over 100 acres of wetland and forest to the RRCA in the area known as Lakeview Marsh. The wetland, already a popular birding spot, is home to many species of plants and animals. To date, the RRCA conserves, manages, and protects 1,644 acres of environmentally significant land.



RRCA IMPROVED LOCAL LANDSCAPE BY PLANTING 60,000 TREES AND FOSTERING AGRICULTURAL STEWARDSHIP

The RRCA had a busy year sprucing up the landscape through its local tree planting initiatives. A total of 60,000 native trees and shrubs were planted across the RRCA's watershed jurisdiction in 2021, adding to the one million trees planted by the Conservation Authority since 1994. As well, the RRCA facilitated the implementation of agricultural stewardship best management practices by local farmers through initiatives such as workshops, virtual farm tours, and an on-farm advisory service pairing farmers with local experts.

RRCA BY THE NUMBERS

- Established in **1963** to address local flooding, drainage, and water supply concerns
- **1,680** km² watershed jurisdiction
- Owns and protects **1,644** acres of environmentally significant land
- **86,500** residents
- **5** member municipalities
- **8** municipally-appointed board members
- **3** conservation areas

IN 2021

- **311** development applications processed
- **60,000** trees planted
- **175,000** conservation area visitors
- **2** flood statements issued
- **2** low water response statements issued



SCAN TO SEE ALL
RRCA NEWS



A LiDAR image showing the mouth of the Raisin River in South Glengarry. In 2021, RRCA and its partners initiated the acquisition of LiDAR imagery for its entire jurisdiction, a valuable tool for floodplain and hazard mapping.

Under the *Conservation Authorities Act* and the *Planning Act*, Conservation Authorities review development near or within shorelines, floodplains, and erosion-prone areas in their jurisdiction to protect people, property, and the environment. Additionally, the RRCA protects local drinking water sources from contamination and overuse under the Drinking Water Source Protection program.

The RRCA is also the lead agency in the Cornwall Sediment Strategy, a component of the St. Lawrence River Remedial Action Plan designed to prevent the disturbance of sediment along the Cornwall waterfront.



RRCA regulations and planning reviews help protect against natural hazards, such as damage from flooding or ice heaves.



RRCA staff conducting a site inspection in South Stormont.



Drinking Water Source Protection roadside sign in North Glengarry.

SUSTAINABLE DEVELOPMENT ACTIVITIES

175 PLANNING ACT APPLICATIONS REVIEWED

136 PERMITS ISSUED UNDER THE CONSERVATION AUTHORITIES ACT

76 DRINKING WATER SOURCE PROTECTION PROGRAM RISK MANAGEMENT OFFICE SCREENINGS

24 PROPERTY INQUIRIES

1 CORNWALL SEDIMENT STRATEGY REVIEW



SCAN TO LEARN WHICH DEVELOPMENT ACTIVITIES REQUIRE A PERMIT FROM THE RRCA



Community tree planting held in partnership with the Township of South Stormont. This project received funding support from the Government of Ontario.



Family Fishing Week Scavenger Hunt prize catch in South Glengarry. The event was made possible through funding support from Ontario Power Generation.

AGRICULTURAL STEWARDSHIP PROJECTS, OUTREACH & INCENTIVES

99

NEW ACRES DEDICATED TO ALUS PROJECTS

69

ACRES RENEWED FOR ALUS PROJECTS

23

ALUS AGRICULTURAL STEWARDSHIP PROJECTS

15

LANDOWNERS PARTICIPATING IN ALUS PROJECTS

10

ADVISORY SERVICE GRANTS TO LOCAL FARMERS

3

VIRTUAL WORKSHOPS

2

VIRTUAL FARM TOURS



1M TREES PLANTED SINCE 1994

60,000 TREES PLANTED IN 2021



RRCA staff (right) hosting a virtual farm tour showcasing a wetland project in South Glengarry.



Residents learn about local environmentally significant sites through the Raisin Region GeoAdventure, which received funding support from the City of Cornwall.



Tree Giveaway in North Stormont. RRCA partnered with its member municipalities to distribute a total of 2,500 free trees to residents in all five communities.

In 2021, the RRCA engaged the local community in conservation through various events held with COVID-19 safety protocols in place. These events included two community tree plantings, a family fishing week scavenger hunt, free tree giveaways, and an ongoing educational geocaching challenge.

The RRCA also fosters stewardship in its jurisdiction by offering tree planting services, leading various projects within the St. Lawrence River Area of Concern, hosting the Alternative Land Use Services (ALUS) Ontario East Coordinator, and facilitating the implementation of agricultural best management practices.

SCAN TO LEARN MORE ABOUT THE RRCA'S FORESTRY SERVICES





The Flood Forecasting and Warning program provides residents and municipalities with advance warning of potential flooding.



RRCA staff collecting a water sample in North Glengarry.



Kenyon Dam in North Glengarry.

The RRCA operates and maintains eight water control structures, monitors water quality and quantity, and provides a Flood Forecasting and Warning and Low Water Response program.

MONITORING NETWORKS

10

STREAM GAUGE MONITORING SITES

9

PROVINCIAL GROUNDWATER MONITORING NETWORK WELLS

9

PROVINCIAL SURFACE WATER QUALITY MONITORING NETWORK SITES

2

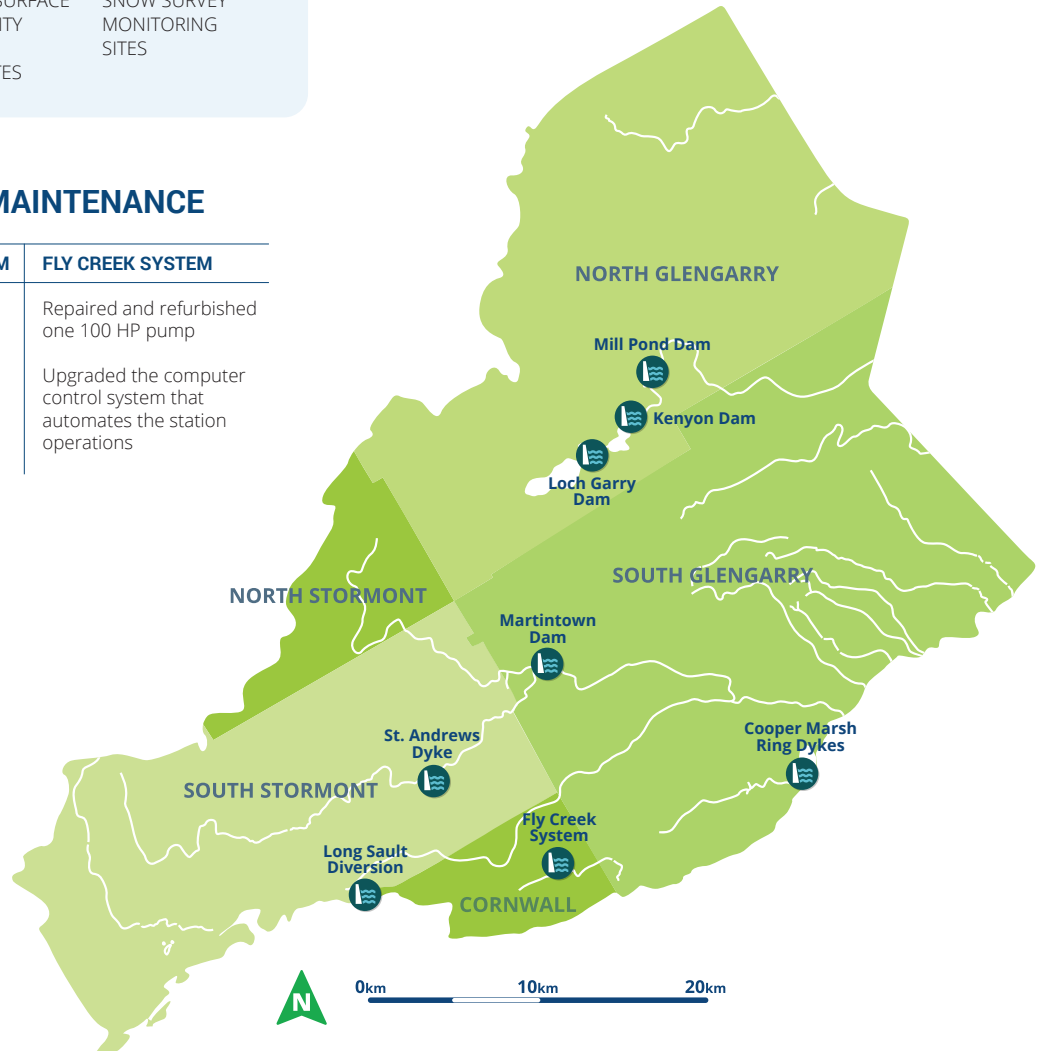
SNOW SURVEY MONITORING SITES

FLOOD & DROUGHT MESSAGES

- 1 Water Safety Statement
- 2 Low Water Response Level 1
- 1 Flood Outlook Statement
- 0 Low Water Response Level 2
- 0 Flood Watches
- 0 Low Water Response Level 3
- 0 Flood Warnings

WATER CONTROL STRUCTURE MAINTENANCE

LOCH GARRY DAM	KENYON DAM	MILL POND DAM	FLY CREEK SYSTEM
Replaced overflow spillway culverts	Upgraded and replaced dam safety signage	Upgraded and replaced dam safety signage	Repaired and refurbished one 100 HP pump
Upgraded and replaced dam safety signage			Upgraded the computer control system that automates the station operations



SCAN TO VIEW THE RRCA'S CURRENT FLOOD STATUS INDICATOR



The RRCA owns and manages 1,644 acres of environmentally significant properties, including three Conservation Areas which enable residents and visitors to step into nature through various amenities such as park and picnic areas, wildlife viewing blinds and platforms, a marina, campground, interpretive centre, and a combined 25 km of nature trails.



Gray's Creek Marina

175,000 TOTAL VISITORS IN 2021

CONSERVATION AREA HIGHLIGHTS

GRAY'S CREEK

- **110,000** visitors
- **6** dock replacements
- **4** bridges and boardwalks repaired
- **3** new geocaches
- Installation of dog waste disposal stations

CHARLOTTENBURGH PARK

- **25,000** visitors
- **8** additional lots provided with electrical service
- Updated camping reservation system
- **1** new geocache
- Installation of dog waste disposal stations

COOPER MARSH

- **40,000** visitors
- Mapping of invasive plant species for future management
- Identification of biodiversity enhancement opportunities
- Launch of citizen science biodiversity monitoring
- **1** new geocache installed



Charlottenburgh Park Campground



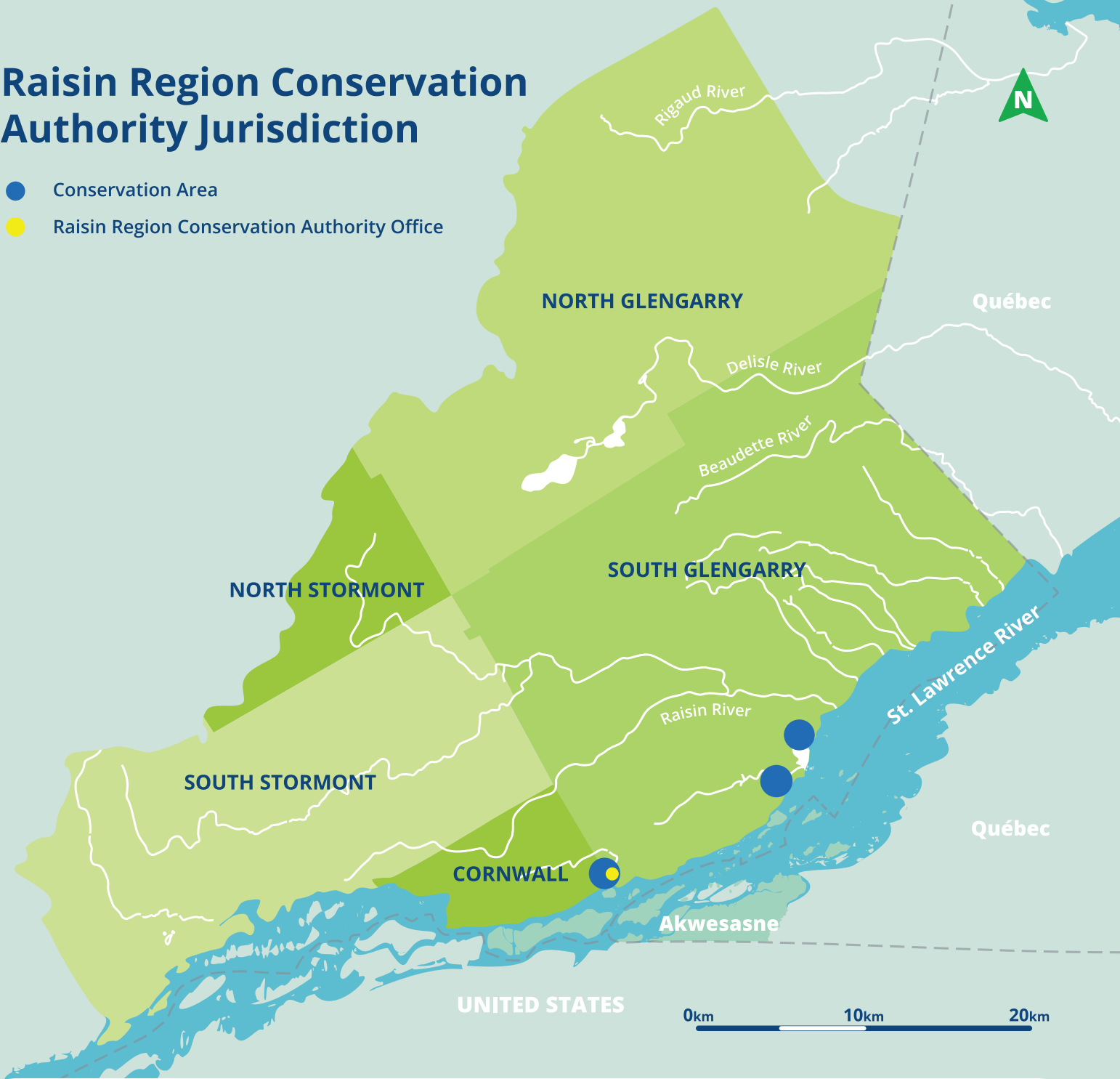
Cooper Marsh Conservation Area



SCAN TO LEARN MORE ABOUT THE RRCA'S THREE CONSERVATION AREAS

Raisin Region Conservation Authority Jurisdiction

- Conservation Area
- Raisin Region Conservation Authority Office



**Raisin Region
Conservation Authority**

Guiding our community in the protection, enhancement and restoration of our natural environment through programs that balance human, environmental and economic needs for a sustainable future.

   @raisinregion



Scan to subscribe to the
RRCA's Monthly
Newsletter

18045 County Road 2, Cornwall, ON K6H 5T2
(613) 938-3611
info@rrca.on.ca
rrca.on.ca

Member of

